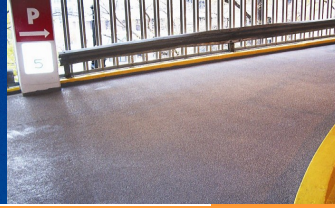




P.O. Box 65631
Salt Lake City, Utah 84165

Phone: 801—556-9238
Fax: 801—281-3007
rickbcrs@gmail.com



PROJECT:

China Bridge Parking Structure Repair

COMPLETION DATE:

Fall of 2010
and
Spring of 2011

PROPERTY OWNER / MANAGERS :

Park City Municipal Corporation
Swede Alley
Park City, Utah

Facility:

This parking structure consists of multi-directional, post tensioned slabs, supported by concrete shear walls and columns.

Scope of Work:

CRS was awarded the contract to repair the China Bridge multilevel parking structure. This project consisted of the repair of post tension cables, replacement of the expansion joints, repairs to concrete columns, delaminated post-tension slabs and parapet walls.

Once concrete repairs were completed cracks were caulked and a waterproof traffic bearing membrane was installed on new concrete and over the existing worn membrane system. A height restriction bar was then installed to help limit what size of vehicles could gain access. The parking areas were re-striped to match the previous lanes at the completion of the project.



Above: Photo shows completed upper level of parking structure.



Exposed broken post-tension cable located at concrete de-lamination.



Repair of post-tensioned cable.



Detail of newly installed expansion joint.